

 **Primary 3 - Term 4 (SA2) Science (TN)** 
[Duplicate](#)[Print](#)[Delete](#)[Assign Test](#)**Test Introduction**[+ Add Introduction](#)**56 Questions** (52 Points)Question Bank: 19,439 Questions 

Test Questions

1 Test Assignment

Question 1

Primary 3 Science » Primary 3 Science (Term 4)

2 pts

Section A: 22x2 marks

Which of the following shows the correct examples of living things and non-living things?

	Living things	Non-living things
(1)	Cat	Fish
(2)	Tree	Lamp
(3)	Vase	Table
(4)	Grass	Bread mould

A) 1

✓ B) 2

C) 3

D) 4

Question Type: Multiple Choice

Randomize Answers: No

Date Added: Wed 12th Aug 2020

Last Modified: N/A

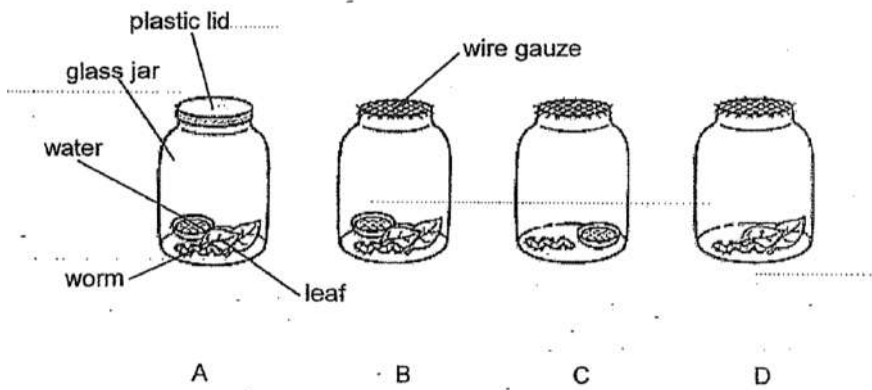
QID#: 22,990,793

[Answers](#) | [Edit](#) | [Duplicate](#) | [Used In](#) | [Reorder](#)
[Remove From Test](#)**Question 2**

Primary 3 Science » Primary 3 Science (Term 4)

2 pts

Mary set up four jars, A, B, C and D, as shown below.



Which two set-ups should Mary use to find out whether living things need water to survive?

- A) A and B
- B) A and C
- ✓ C) B and D
- D) C and D

Question Type: Multiple Choice
Randomize Answers: No
Date Added: Wed 12th Aug 2020
Last Modified: N/A
QID#: 22,990,852

[Answers](#) | [Edit](#) | [Duplicate](#) | [Used In](#) | [Reorder](#)

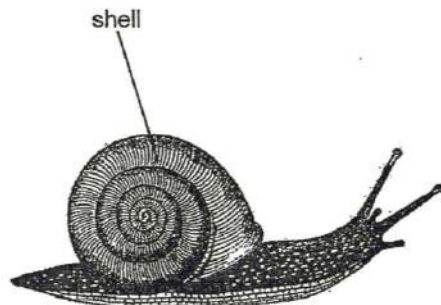
[Remove From Test](#)

Question 3

Primary 3 Science » Primary 3 Science (Term 4)

2 pts

Ravi watched a snail in his garden. He touched it gently and observed that the snail moved into its shell immediately.



Which characteristic of living things did the snail display?

- A) Living things can die
- B) Living things can grow
- ✓ C) Living things respond to changes around them
- D) Living things need air, food and water to survive

Question Type: Multiple Choice
Randomize Answers: No
Date Added: Wed 12th Aug 2020
Last Modified: N/A
QID#: 22,990,868

[Answers](#) | [Edit](#) | [Duplicate](#) | [Used In](#) | [Reorder](#)

[Remove From Test](#)

Question 4

Primary 3 Science » Primary 3 Science (Term 4)



2 pts



Susan wanted to find out what A and B are. She placed A and B each in a brightly lit room on Day 1 with a daily supply of water. 500g of leaves was placed in each room on the first day. On Day 4, she measured the amount of leaves left. Her readings are shown in the table below.

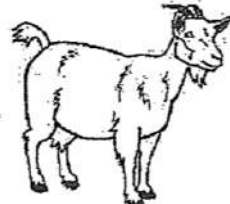

	A	B
Amount of food given on Day 1 (g)	500	500
Amount of food left on Day 4 (g)	500	100

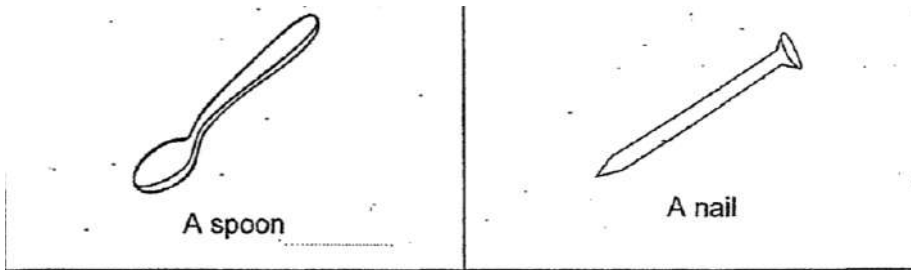
Which of the following could A and B be?

- ✓ A)

A	B
 A towel	 A hamster
- B)

 A bird	 A laptop
---	---
- C)

 A goat	 A rabbit
---	---
- D)



Question Type: Multiple Choice
 Randomize Answers: No
 Date Added: Wed 12th Aug 2020
 Last Modified: N/A
 QID#: 22,990,889

[Answers](#) | [Edit](#) | [Duplicate](#) | [Used In](#) | [Reorder](#)

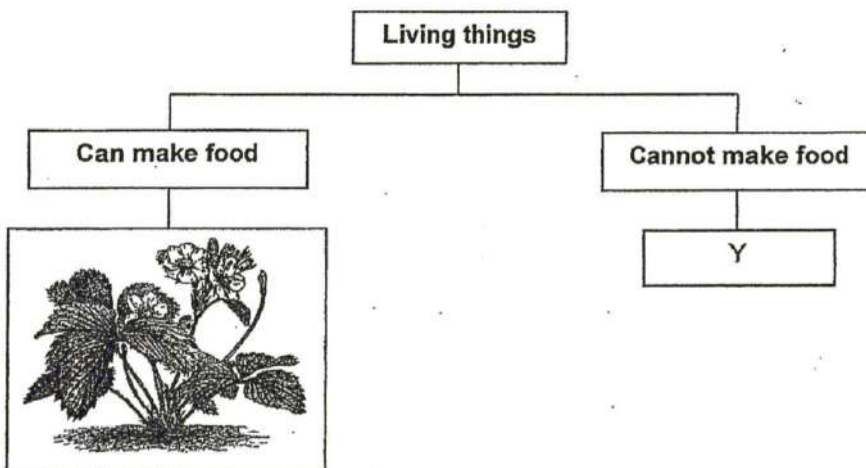
[Remove From Test](#)

Question 5

Primary 3 Science » Primary 3 Science (Term 4)

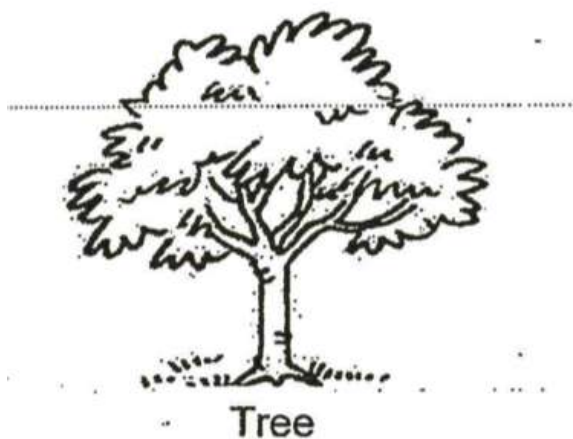
2 pts

The diagram below shows the classification of living things.

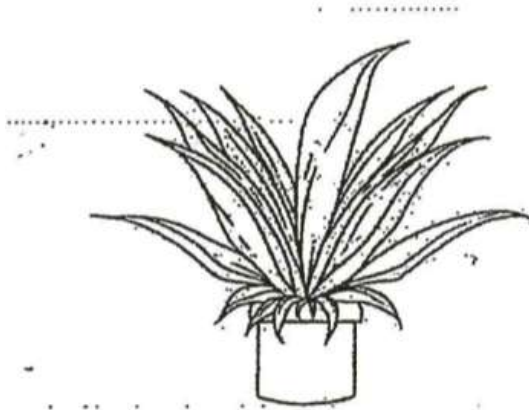


Which of the following could Y be?

A)



B)



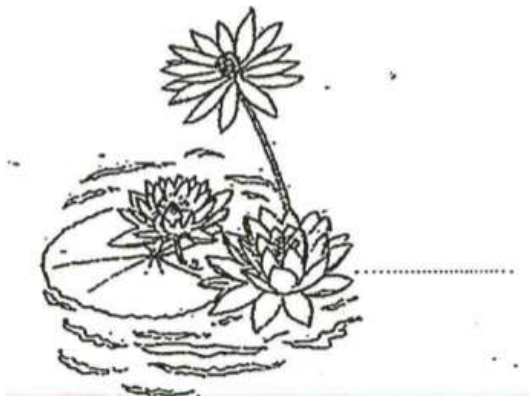
Plant

✓ C)



Mushroom

D)



Water plant

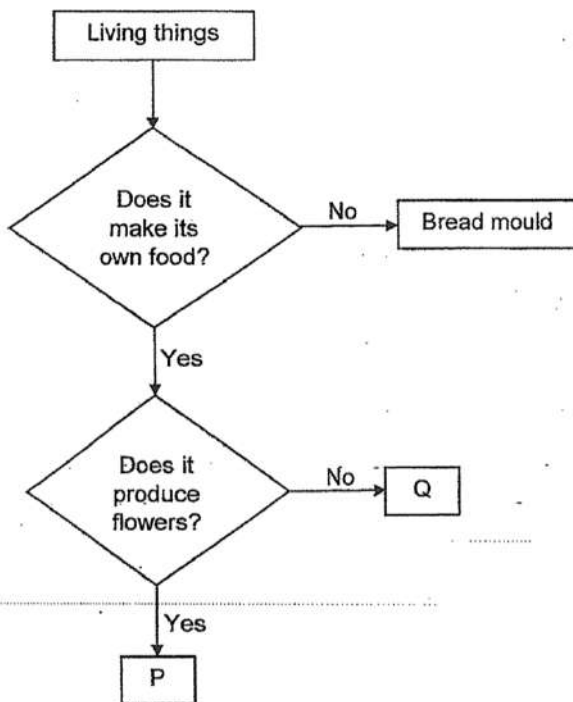
Question Type: Multiple Choice
Randomize Answers: No
Date Added: Wed 12th Aug 2020
Last Modified: N/A
QID#: 22,990,910

Question 6

Primary 3 Science » Primary 3 Science (Term 4)

2 pts

Study the flow chart below.



Which of the following best describe P and Q?

	P	Q
(1)	P is a plant.	Q is an animal.
(2)	P has leaves.	Q does not have leaves.
(3)	P needs sunlight to survive.	Q does not need sunlight to survive.
(4)	P bears fruits.	Q does not bear fruits.

- A) 1
 B) 2
 C) 3
 ✓ D) 4

Question Type: Multiple Choice
Randomize Answers: No
Date Added: Wed 12th Aug 2020
Last Modified: N/A
QID#: 22,990,916

Question 7

Primary 3 Science » Primary 3 Science (Term 4)

2 pts

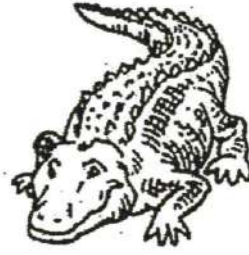
Study the animals below.



Snake



Fish



Crocodile

What do these animals have in common?

- ✓ A) They have scales
- B) They have four legs
- C) They swim using their fins
- D) They give birth to their young alive

Question Type: Multiple Choice
Randomize Answers: No
Date Added: Wed 12th Aug 2020
Last Modified: N/A
QID#: 22,990,931

[Answers](#) | [Edit](#) | [Duplicate](#) | [Used In](#) | [Reorder](#)

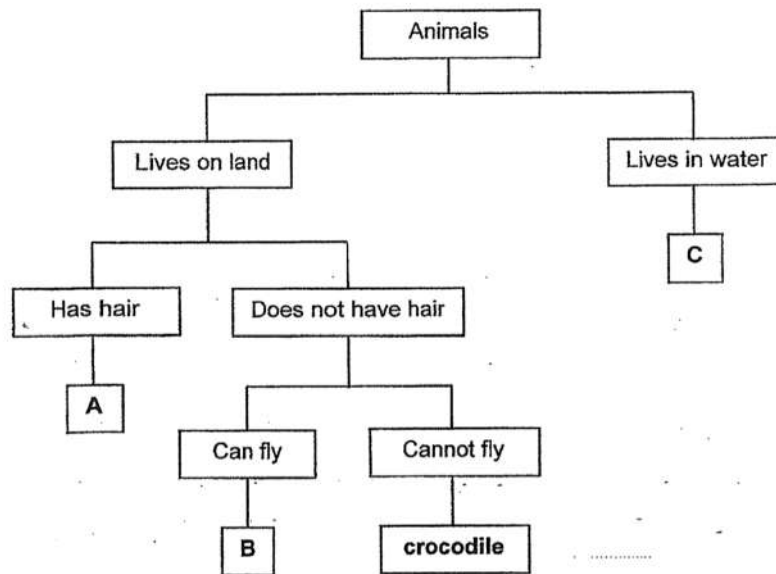
[Remove From Test](#)

Question 8

Primary 3 Science » Primary 3 Science (Term 4)

2 pts

Study the classification chart below.



What do A, B and C represent?

	A	B	C
(1)	dog	eagle	goldfish
(2)	eagle	goldfish	butterfly
(3)	dog	butterfly	eagle
(4)	butterfly	dog	goldfish

- ✓ A) 1
 B) 2
 C) 3
 D) 4

Question Type: Multiple Choice
Randomize Answers: No
Date Added: Wed 12th Aug 2020
Last Modified: N/A
QID#: 22,990,937

[Answers](#) | [Edit](#) | [Duplicate](#) | [Used In](#) | [Reorder](#)

[Remove From Test](#)

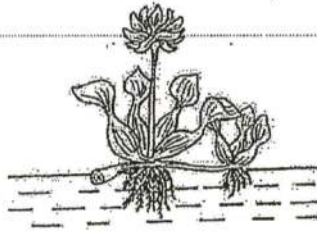
Question 9

Primary 3 Science » Primary 3 Science (Term 4)

2 pts

The table below shows some information on four plants, A, B, C and D.
A tick (✓) shows that the characteristic is present in that plant.

Plant	Characteristics		
	Has fruits	Can make its own food	Grows on land
A	✓	✓	✓
B	✓	✓	
C		✓	
D		✓	✓



The plant shown in the diagram above has similar characteristics as _____.

- A) A
- B) B
- ✓ C) C
- D) D

Question Type: Multiple Choice
Randomize Answers: No
Date Added: Wed 12th Aug 2020
Last Modified: N/A
QID#: 22,990,949

[Answers](#) | [Edit](#) | [Duplicate](#) | [Used In](#) | [Reorder](#)

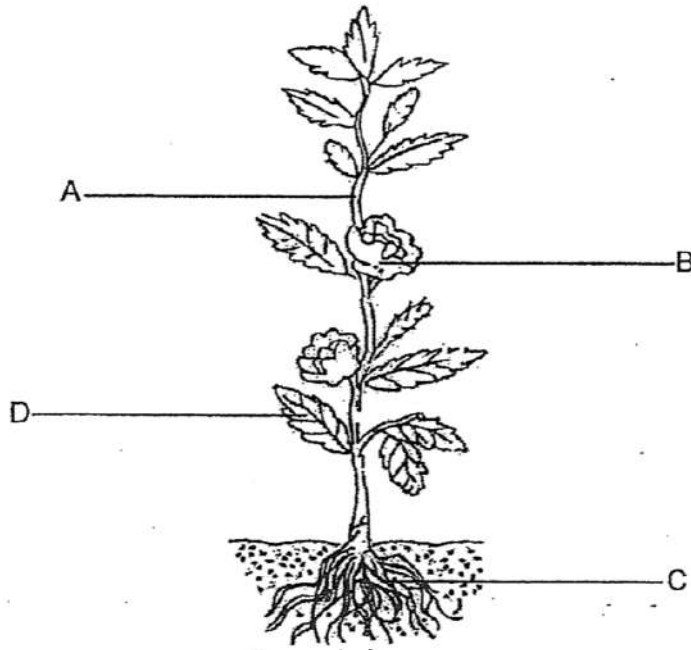
[Remove From Test](#)

Question 10

Primary 3 Science » Primary 3 Science (Term 4)

2 pts

Study the plant shown below.



Which plant part shown above, A, B, C or D, supports the plant?

- A) A
- B) B
- ✓ C) C
- D) D

Question Type: Multiple Choice
Randomize Answers: No
Date Added: Wed 12th Aug 2020
Last Modified: N/A
QID#: 22,990,957

[Answers](#) | [Edit](#) | [Duplicate](#) | [Used In](#) | [Reorder](#)

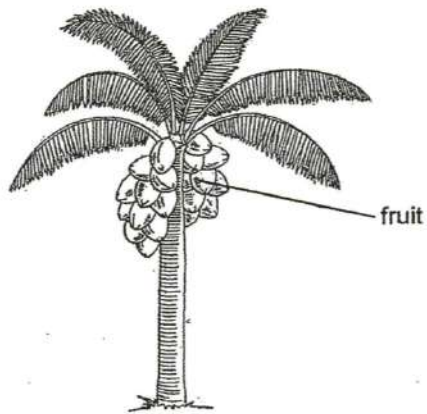
[Remove From Test](#)

Question 11

Primary 3 Science » Primary 3 Science (Term 4)

2 pts

The diagram below shows a coconut tree.



Based on the above diagram, which of the following is true about the coconut tree?

- A) It is a flowering plant with a weak stem
- ✓ B) It is a flowering plant with a strong stem
- C) It is a non-flowering plant with a strong stem
- D) It is a non-flowering plant with a weak stem

Question Type: Multiple Choice
Randomize Answers: No
Date Added: Wed 12th Aug 2020
Last Modified: N/A
QID#: 22,990,971

[Answers](#) | [Edit](#) | [Duplicate](#) | [Used In](#) | [Reorder](#)

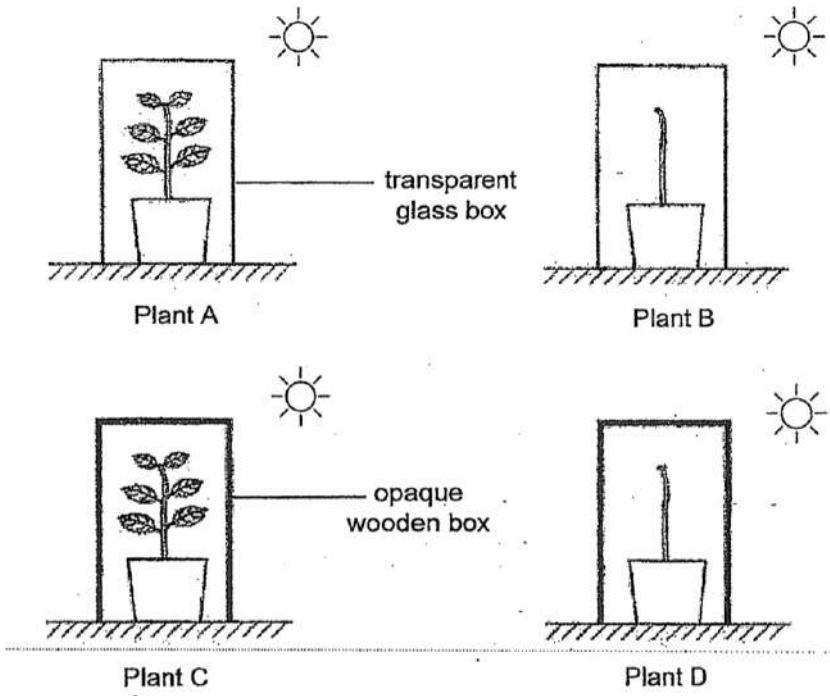
[Remove From Test](#)

Question 12

Primary 3 Science » Primary 3 Science (Term 4)

2 pts

Wendy placed 4 similar plants in the set ups as shown below. She watered th plants daily with the same amount of water.



Which plant is most likely to continue growing after 1 month?

- ✓ A) Plant A
- B) Plant B
- C) Plant C
- D) Plant D

Question Type: Multiple Choice
Randomize Answers: No
Date Added: Wed 12th Aug 2020
Last Modified: N/A
QID#: 22,990,980

[Answers](#) | [Edit](#) | [Duplicate](#) | [Used In](#) | [Reorder](#)

[Remove From Test](#)

Question 13

Primary 3 Science » Primary 3 Science (Term 4)

2 pts

Sean is running with his net to catch a butterfly immediately after a meal.



Which organ systems in Sean's body are working together when he is catching the butterfly?

- A. Skeletal system
- B. Digestive system
- C. Circulatory system
- D. Respiratory system

- A) B and C
- B) C and D
- ✓ C) A, B and D
- D) A, B, C and D

Question Type: Multiple Choice
Randomize Answers: No
Date Added: Wed 12th Aug 2020
Last Modified: N/A
QID#: 22,990,996

[Answers](#) | [Edit](#) | [Duplicate](#) | [Used In](#) | [Reorder](#)

[Remove From Test](#)

Question 14

Primary 3 Science » Primary 3 Science (Term 4)

2 pts

Sarah's grandmother has lost most of her teeth but she still needs to eat her food. What will most likely happen to the food that she has taken as compared to her having her full set of teeth?

- A) The food cannot be digested at all
- B) The food cannot be absorbed at all
- ✓ C) The food will take longer time to digest
- D) The food can be chewed into smaller pieces

Question Type: Multiple Choice
Randomize Answers: No
Date Added: Wed 12th Aug 2020
Last Modified: N/A
QID#: 22,991,029

[Answers](#) | [Edit](#) | [Duplicate](#) | [Used In](#) | [Reorder](#)

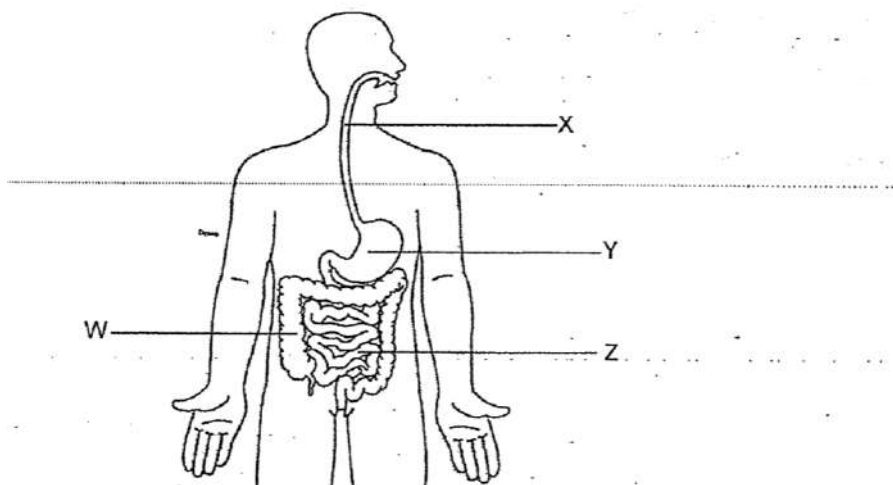
[Remove From Test](#)

Question 15

Primary 3 Science » Primary 3 Science (Term 4)

2 pts

Study the diagram of the human digestive system below.



In the human digestive system, which parts do not contain digestive juices?

- ✓ A) W and X
- B) W and Z
- C) X and Y
- D) Y and Z

Question Type: Multiple Choice
Randomize Answers: No
Date Added: Wed 12th Aug 2020
Last Modified: N/A
QID#: 22,991,051

[Answers](#) | [Edit](#) | [Duplicate](#) | [Used In](#) | [Reorder](#)

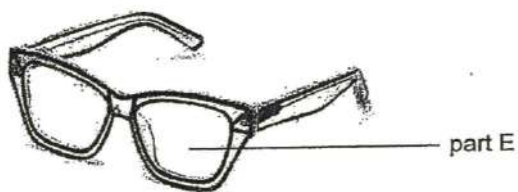
[Remove From Test](#)

Question 16

Primary 3 Science » Primary 3 Science (Term 4)

2 pts

The diagram below shows a pair of reading spectacles.



Which is the most important property to consider when selecting a suitable material to make part E?

- A) It is light
- B) It can bend easily

- C) It does not break easily
- ✓ D) It allows most light to pass through it

Question Type: Multiple Choice
Randomize Answers: No
Date Added: Wed 12th Aug 2020
Last Modified: N/A
QID#: 22,991,132

[Answers](#) |
 [Edit](#) |
 [Duplicate](#) |
 [Used In](#) |
 [Reorder](#)

[Remove From Test](#)

Question 17

Primary 3 Science » Primary 3 Science (Term 4)

2 pts

The table below shows the properties of three materials, P, Q and R.
 A tick (✓) shows that the property is present.

Properties	Materials		
	P	Q	R
Flexible	✓	✓	
Absorbent to water		✓	
Allows light to pass through			✓

Based on the information given in the table above, what would P, Q and R most likely be?

	P	Q	R
(1)	rubber	steel	fabric
(2)	clear glass	fabric	steel
(3)	clear glass	steel	rubber
(4)	rubber	fabric	clear glass

- A) 1
- B) 2
- C) 3
- ✓ D) 4

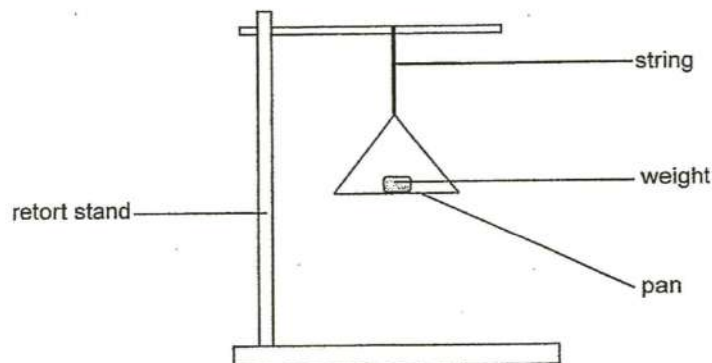
Question Type: Multiple Choice
Randomize Answers: No
Date Added: Wed 12th Aug 2020
Last Modified: N/A
QID#: 22,991,140

Question 18

Primary 3 Science » Primary 3 Science (Term 4)

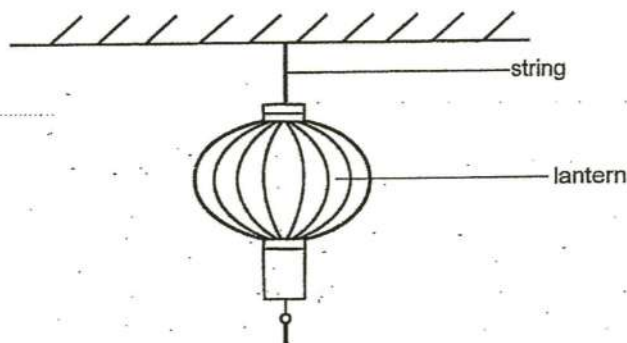
2 pts

Benjamin set up an experiment as shown below. He decided to test the strings of different materials that are of similar length and thickness. He added weights, of equal mass, onto the pan until the string broke. His results were shown in the table below.



	A	B	C	D
Number of 10 g weights added before the string broke	3	8	9	10

From the table above, which string A, B, C or D, would be able to hang a 95g lantern from the ceiling without breaking?



- A) A
 B) B
 C) C
 D) D

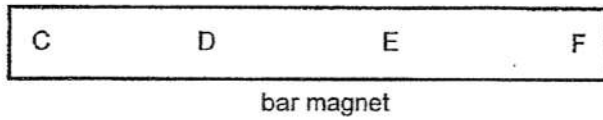
Question Type: Multiple Choice
Randomize Answers: No
Date Added: Wed 12th Aug 2020
Last Modified: N/A
QID#: 22,991,172

Question 19

Primary 3 Science » Primary 3 Science (Term 4)

2 pts

Alice lowered the bar magnet below into a container filled with iron pins.



Which parts of the magnet are likely to attract the most number of iron pins?

- A) C and C
- ✓ B) C and F
- C) D and E
- D) E and F

Question Type: Multiple Choice
Randomize Answers: No
Date Added: Wed 12th Aug 2020
Last Modified: N/A
QID#: 22,991,183

[Answers](#) | [Edit](#) | [Duplicate](#) | [Used In](#) | [Reorder](#)

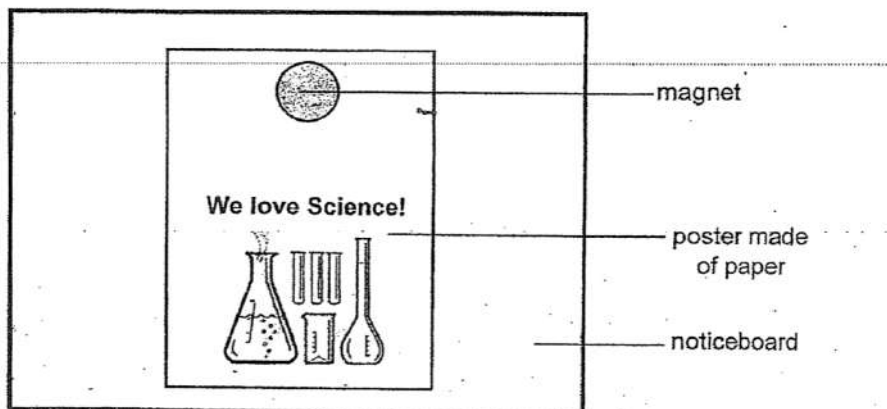
[Remove From Test](#)

Question 20

Primary 3 Science » Primary 3 Science (Term 4)

2 pts

Ken displayed a poster on the class noticeboard using a magnet as shown below.



What material is the noticeboard made of?

- ✓ A) iron
- B) gold
- C) wood
- D) plastic

Question Type: Multiple Choice
Randomize Answers: No
Date Added: Wed 12th Aug 2020
Last Modified: N/A

QID#:

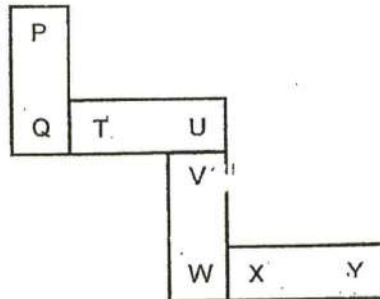
22,991,190

[Answers](#) | [Edit](#) | [Duplicate](#) | [Used In](#) | [Reorder](#)
[Remove From Test](#)**Question 21**

Primary 3 Science » Primary 3 Science (Term 4)

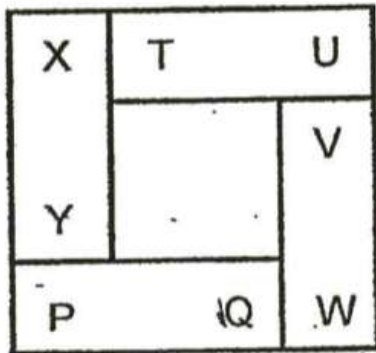
2 pts

Four bar magnets can be arranged as shown below. Their poles are P, Q, T, U, V, W, X and Y.

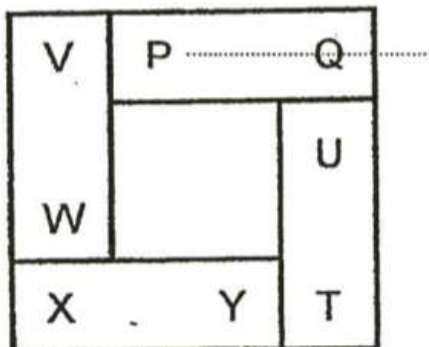


Which is another possible arrangement of the magnets?

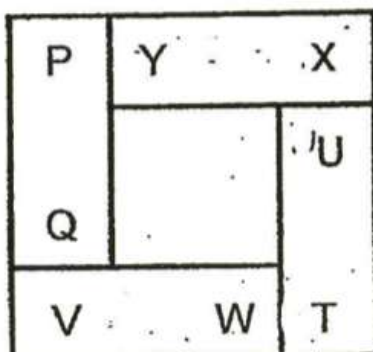
A)



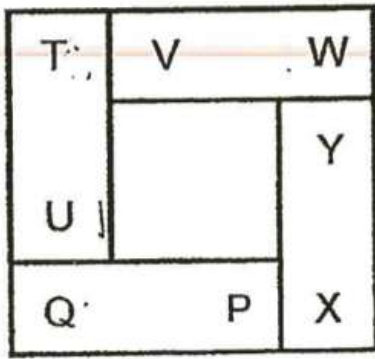
B)



✓ C)



D)



Question Type: Multiple Choice
Randomize Answers: No
Date Added: Wed 12th Aug 2020
Last Modified: N/A
QID#: 22,991,215

[Answers](#) | [Edit](#) | [Duplicate](#) | [Used In](#) | [Reorder](#)

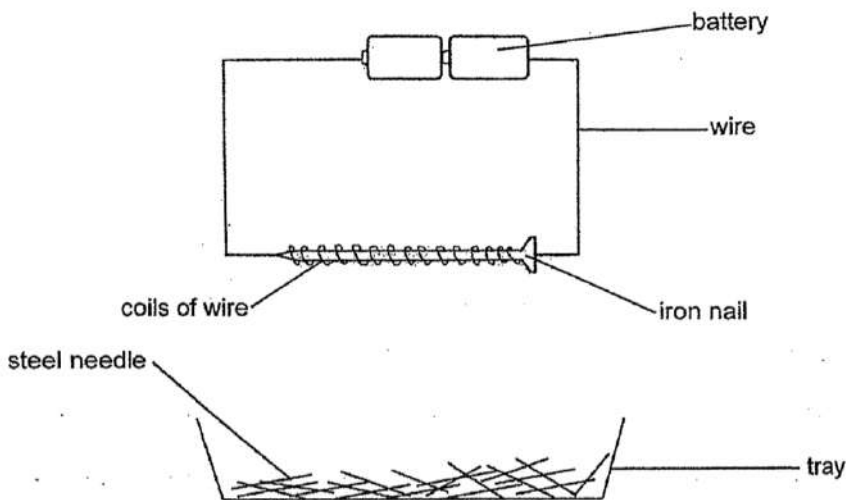
[Remove From Test](#)

Question 22

Primary 3 Science » Primary 3 Science (Term 4)

2 pts

Juliana prepared the set-up below. When the tray of needles was brought near to the iron nail, ten needles were attracted to the iron nail.



What change can she make to the set-up so that the nail can attract more needles?

- A) Increase the number of batteries
- B) Change the iron nail to an aluminium nail
- C) Change the steel needles to plastic needles
- D) Decrease the number of coils of wire around the iron nail

Question Type: Multiple Choice
Randomize Answers: No
Date Added: Wed 12th Aug 2020

Last Modified: N/A
QID#: 22,991,230

[Answers](#) | [Edit](#) | [Duplicate](#) | [Used In](#) | [Reorder](#)

[Remove From Test](#)

Question 23

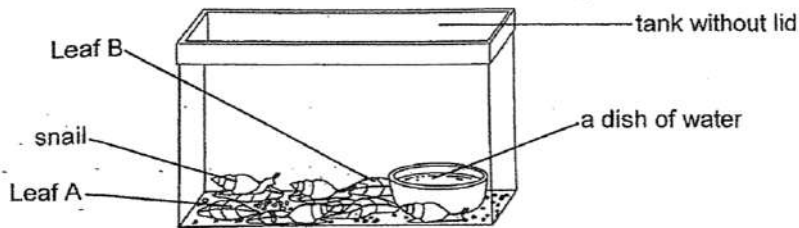
Primary 3 Science » Primary 3 Science (Term 4)

1 pt

This section is designed for extended answers that parent/ teacher will have to assign and guide child to attempt after the test has been completed.

Grading: This question type is not graded on this system and will not affect the final score as it was designed in such a way that it requires manual assistance.

Alex put some snails, a dish of water and two different types of leaves, Leaf A and Leaf B, in a tank.



Over the next few weeks, he observed the number of snails, the amount of leaf A and the amount of Leaf B left in the tank. He recorded these in the table below.

Day	Number of snails	Amount of Leaf A (g)	Amount of Leaf B (g)
1	4	300	300
5	4	250	300
10	4	200	300
15	5	150	300
20	5	100	300

Based on the table, what do the snails eat?

- A) Leaf B
 B) Leaf A

Question Type: Multiple Choice
 Randomize Answers: No
 Date Added: Wed 12th Aug 2020
 Last Modified: Wed 12th Aug 2020
 QID#: 22,991,259

[Answers](#) | [Edit](#) | [Duplicate](#) | [Used In](#) | [Reorder](#)

[Remove From Test](#)

Question 24

Primary 3 Science » Primary 3 Science (Term 4)

0 pts

The number of snails had increased over 20 days. Explain why.

Question Type: Essay
Date Added: Wed 12th Aug 2020
Last Modified: Wed 12th Aug 2020
QID#: 22,991,271

Correctly answered feedback

The snails reproduce

Incorrectly answered feedback

The snails reproduce

[Answers](#) | [Edit](#) | [Duplicate](#) | [Used In](#) | [Reorder](#)

[Remove From Test](#)

Question 25

Primary 3 Science » Primary 3 Science (Term 4)

0 pts

What can you conclude about the characteristics of living things from the table?

Question Type: Essay
Date Added: Wed 12th Aug 2020
Last Modified: Wed 12th Aug 2020
QID#: 22,991,285

Correctly answered feedback

Living things reproduce and living things need food to survive

Incorrectly answered feedback

Living things reproduce and living things need food to survive

[Answers](#) | [Edit](#) | [Duplicate](#) | [Used In](#) | [Reorder](#)

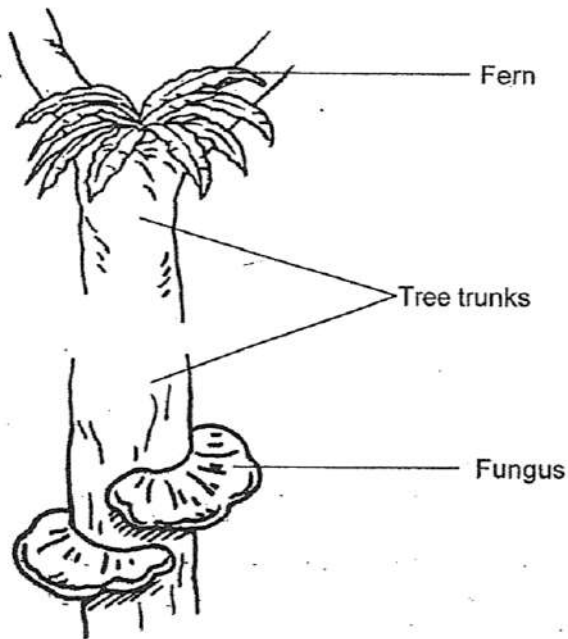
[Remove From Test](#)

Question 26

Primary 3 Science » Primary 3 Science (Term 4)

0 pts

Study the diagrams below.



Besides both living on a tree, state another similarity between the above fern and fungi.

Question Type: Essay
Date Added: Wed 12th Aug 2020
Last Modified: Wed 12th Aug 2020
QID#: 22,991,305

Correctly answered feedback

Both fern and fungi reproduce by spores

Incorrectly answered feedback

Both fern and fungi reproduce by spores

[Answers](#) | [Edit](#) | [Duplicate](#) | [Used In](#) | [Reorder](#)

[Remove From Test](#)

Question 27

Primary 3 Science » Primary 3 Science (Term 4)

0 pts

State a difference between the fern and the fungi

Question Type: Essay
Date Added: Wed 12th Aug 2020
Last Modified: Wed 12th Aug 2020
QID#: 22,991,315

Correctly answered feedback

The fern can make its own food while the fungi cannot make its own food

Incorrectly answered feedback

The fern can make its own food while the fungi cannot make its own food

[Answers](#) | [Edit](#) | [Duplicate](#) | [Used In](#) | [Reorder](#)



[Remove From Test](#)

Question 28

Primary 3 Science » Primary 3 Science (Term 4)

0 pts

Two similar pieces of meat, A and B, were placed in different conditions as shown below.

		
Meat	A	B
Location of meat	On the table	In refrigerator

After 5 hours, which piece of meat, A or B, would have more bacteria? Explain your answer.

Question Type: Essay

Date Added: Wed 12th Aug 2020

Last Modified: Wed 12th Aug 2020

QID#: 22,991,331

Correctly answered feedback

A, as the refrigerator is cold, so not as much moisture can grow on the meat, but the table is warmer, so more moisture can grow on it.

Incorrectly answered feedback

A, as the refrigerator is cold, so not as much moisture can grow on the meat, but the table is warmer, so more moisture can grow on it.

[Answers](#) | [Edit](#) | [Duplicate](#) | [Used In](#) | [Reorder](#)

[Remove From Test](#)

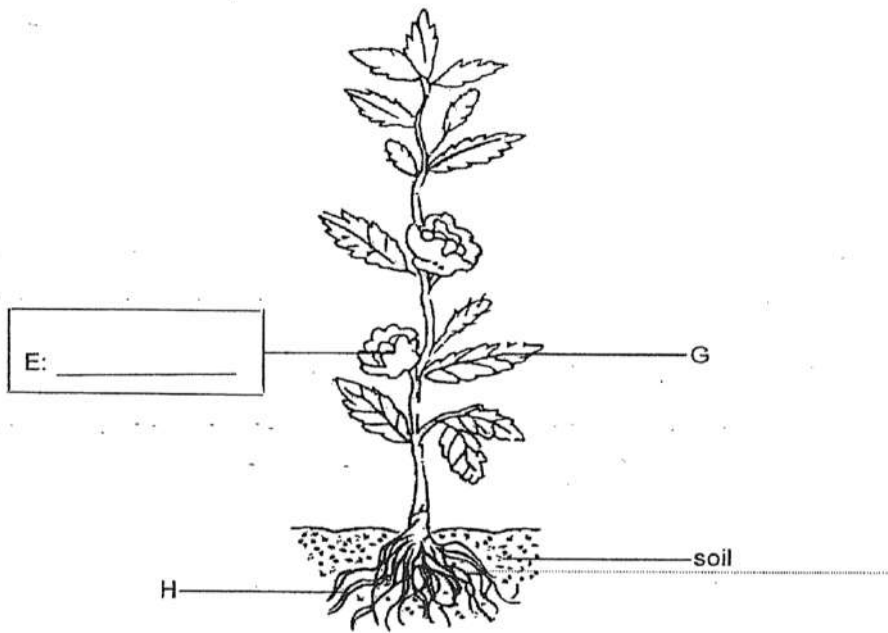
Question 29

Primary 3 Science » Primary 3 Science (Term 4)

0.5 pts

The drawing below shows a plant and its plant parts.

Name the plant parts, E and F, in the boxes below.



Accepted answers:

✓ flower

Question Type: Free Text
Date Added: Wed 12th Aug 2020
Last Modified: N/A
QID#: 22,991,353

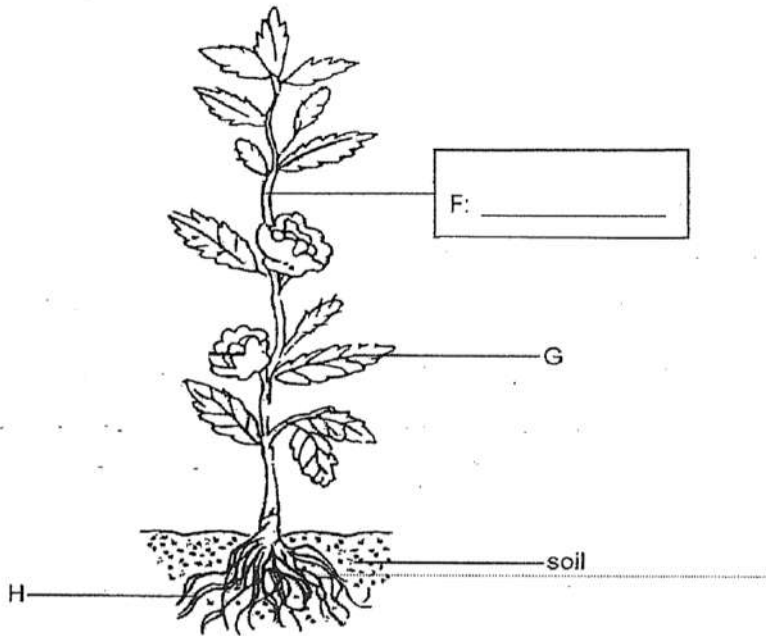
[Answers](#) | [Edit](#) | [Duplicate](#) | [Used In](#) | [Reorder](#)

[Remove From Test](#)

Question 30

Primary 3 Science » Primary 3 Science (Term 4)

0.5 pts



Accepted answers:

✓ stem

Question Type: Free Text
Date Added: Wed 12th Aug 2020
Last Modified: N/A
QID#: 22,991,367

Answers | Edit | Duplicate | Used In | Reorder

Remove From Test

Question 31

Primary 3 Science » Primary 3 Science (Term 4)

0 pts

State two functions of the part H. [2]

Function 1: _____

Function 2: _____

Question Type: Essay
Date Added: Wed 12th Aug 2020
Last Modified: N/A
QID#: 22,991,428

Correctly answered feedback

Function 1: Part H holds the plant firmly to the ground.

Function 2: Part H absorbs water and mineral salts from the soil.

Incorrectly answered feedback

Function 1: Part H holds the plant firmly to the ground.

Function 2: Part H absorbs water and mineral salts from the soil.

[Answers](#) | [Edit](#) | [Duplicate](#) | [Used In](#) | [Reorder](#)

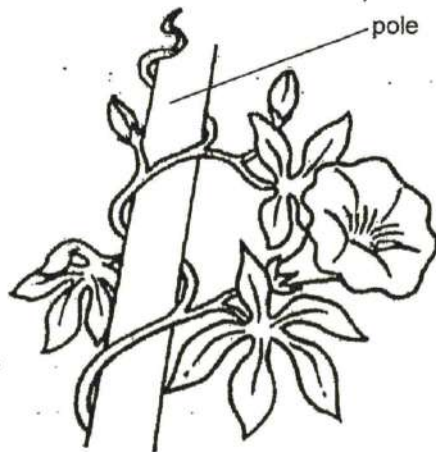
[Remove From Test](#)

Question 32

Primary 3 Science » Primary 3 Science (Term 4)

0 pts

The diagram below shows a plant with weak stem climbing up a pole.



(a) What would happen to the plant if the pole is removed? [1]

Question Type: Essay
 Date Added: Wed 12th Aug 2020
 Last Modified: N/A
 QID#: 22,991,445

Correctly answered feedback

The plant would not be able to trap as much sunlight when it was climbing up the pole at first.

Incorrectly answered feedback

The plant would not be able to trap as much sunlight when it was climbing up the pole at first.

Question 33

Primary 3 Science » Primary 3 Science (Term 4)

0 pts

Explain how climbing up the pole helps the above plant grow better?

Question Type: Essay
Date Added: Wed 12th Aug 2020
Last Modified: N/A
QID#: 22,991,464

Correctly answered feedback

The plant has a weak stem so when it climbs up the pole, there is support for the plant to trap more sunlight to make more food.

Incorrectly answered feedback

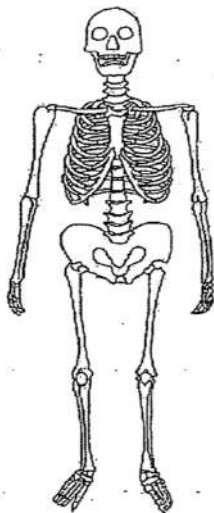
The plant has a weak stem so when it climbs up the pole, there is support for the plant to trap more sunlight to make more food.

Question 34

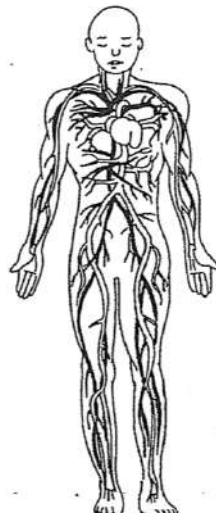
Primary 3 Science » Primary 3 Science (Term 4)

1 pt

The diagrams below show two human organ systems.



System X



System Y

(a) Name System X and System Y, in the blanks below. [2]

System X: _____

Accepted answers:

- ✓ Skeletal
- ✓ Skeletal system

Question Type: Free Text
Date Added: Wed 12th Aug 2020
Last Modified: N/A
QID#: 22,991,482

[Answers](#) | [Edit](#) | [Duplicate](#) | [Used In](#) | [Reorder](#)

[Remove From Test](#)

Question 35

Primary 3 Science » Primary 3 Science (Term 4)

1 pt

System Y: _____

Accepted answers:

- ✓ Circulatory
- ✓ Circulatory system

Question Type: Free Text
Date Added: Wed 12th Aug 2020
Last Modified: N/A
QID#: 22,991,488

[Answers](#) | [Edit](#) | [Duplicate](#) | [Used In](#) | [Reorder](#)

[Remove From Test](#)

Question 36

Primary 3 Science » Primary 3 Science (Term 4)

0 pts

State one function of System X.

Question Type: Essay
Date Added: Wed 12th Aug 2020
Last Modified: N/A
QID#: 22,991,508

Correctly answered feedback

System X gives the body its shape.

Incorrectly answered feedback

System X gives the body its shape.

Question 37

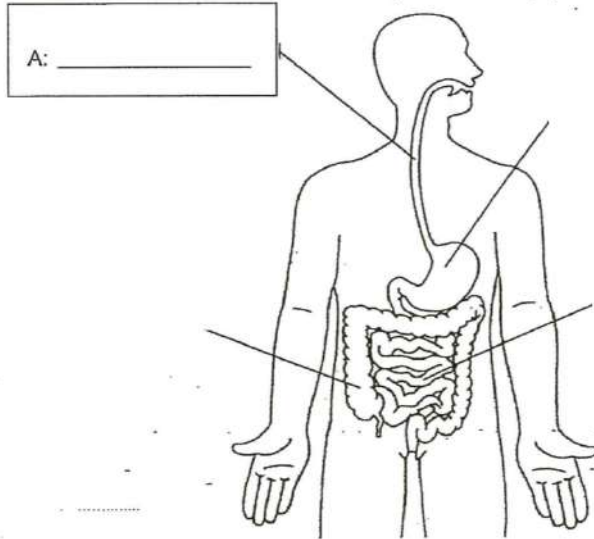
Primary 3 Science » Primary 3 Science (Term 4)

0.5 pts

The human digestive system is shown below.

(a) Label the parts shown.

[2]



Accepted answers:

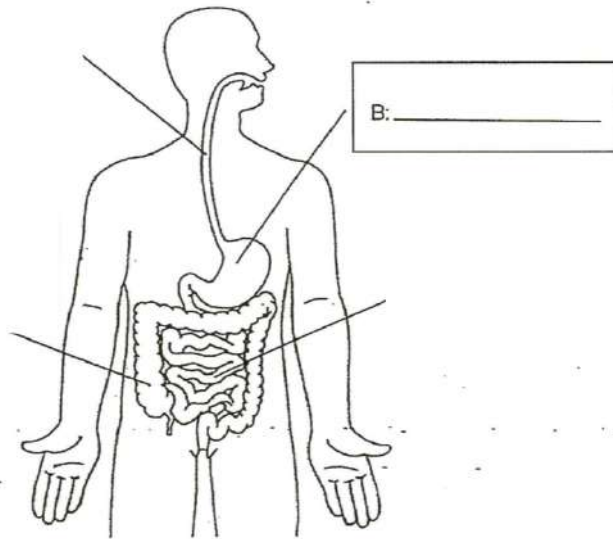
✓ gullet

Question Type: Free Text
Date Added: Wed 12th Aug 2020
Last Modified: N/A
QID#: 22,991,530

Question 38

Primary 3 Science » Primary 3 Science (Term 4)

0.5 pts

**Accepted answers:**

✓ stomach

Question Type: Free Text
Date Added: Wed 12th Aug 2020
Last Modified: N/A
QID#: 22,991,542

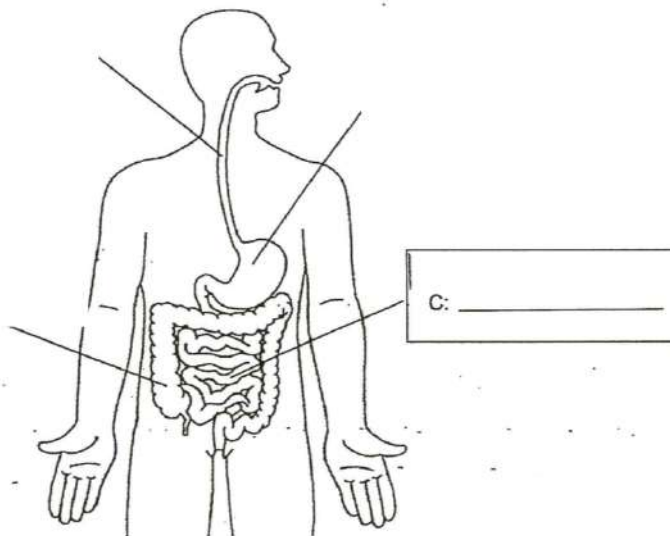
[Answers](#) | [Edit](#) | [Duplicate](#) | [Used In](#) | [Reorder](#)

[Remove From Test](#)

Question 39

Primary 3 Science » Primary 3 Science (Term 4)

0.5 pts

**Accepted answers:**

✓ small intestine

Question Type: Free Text
Date Added: Wed 12th Aug 2020
Last Modified: N/A
QID#: 22,991,557

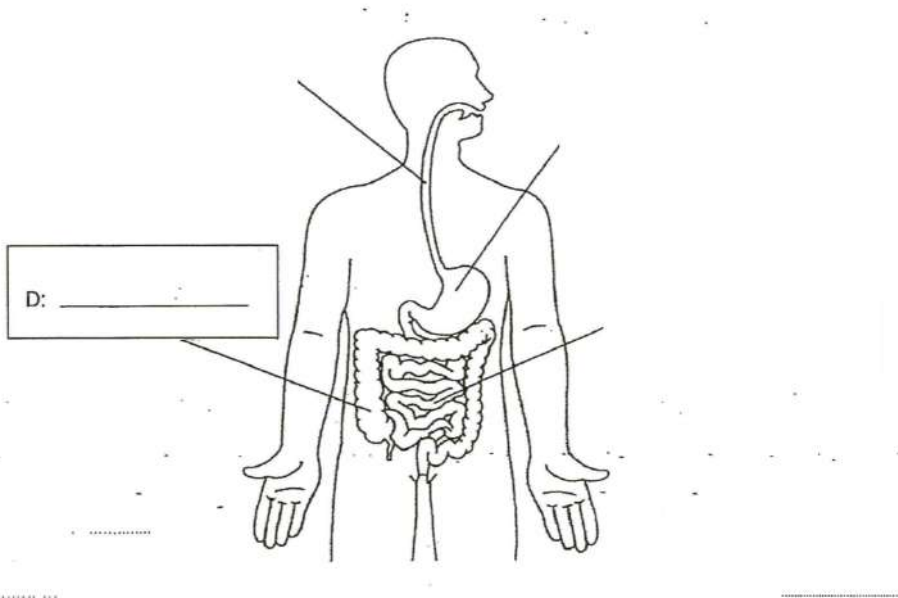
[Answers](#) | [Edit](#) | [Duplicate](#) | [Used In](#) | [Reorder](#)

[Remove From Test](#)

Question 40

Primary 3 Science » Primary 3 Science (Term 4)

0.5 pts



Accepted answers:

✓ large intestine

Question Type: Free Text
Date Added: Wed 12th Aug 2020
Last Modified: N/A
QID#: 22,991,614

[Answers](#) | [Edit](#) | [Duplicate](#) | [Used In](#) | [Reorder](#)

[Remove From Test](#)

Question 41

Primary 3 Science » Primary 3 Science (Term 4)

0 pts

Linda made a statement, "Digestion ends at D."
 Linda's teacher said that her statement was incorrect. Explain Why.

Question Type: Essay
Date Added: Wed 12th Aug 2020
Last Modified: N/A
QID#: 22,991,634

Correctly answered feedback

D does not produce digestive juices.

Incorrectly answered feedback

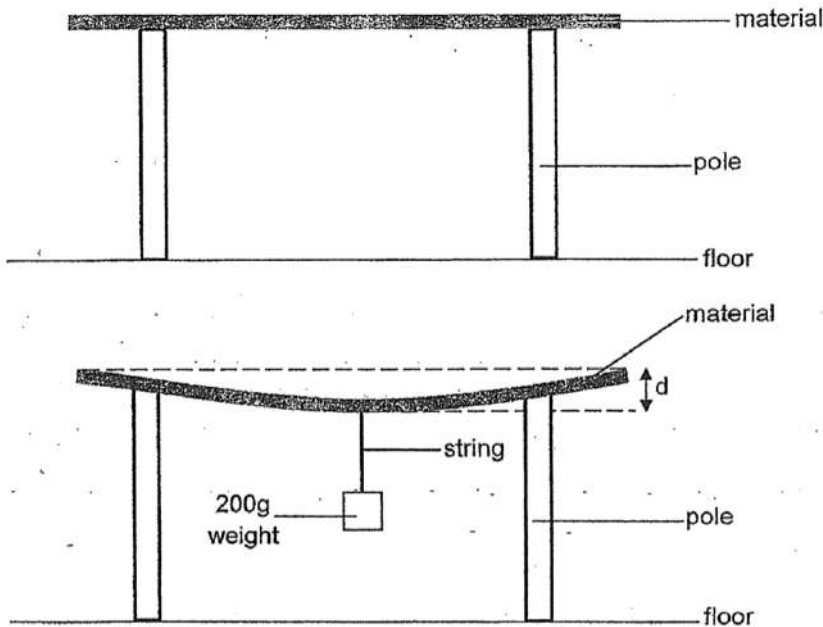
D does not produce digestive juices.

Question 42

Primary 3 Science » Primary 3 Science (Term 4)

1 pt

Mandy wanted to compare the flexibility of four materials of similar thickness, P, Q, R and S. She prepared the set-up below.



She hung a 200g weight on each sheet of material using a string of the same length and thickness and observed how much the material bent. She then measured the distance d shown above. She recorded the results in the table below.

Material	Distance d (cm)
P	0
Q	8
R	3
S	5

(a) Arrange the materials, P, Q, R and S, from the most flexible to the least flexible. [1]

Most flexible \longrightarrow Least flexible

Accepted answers:

- ✓ Q,S,R,P
- ✓ Q, S, R, P
- ✓ Q S R P
- ✓ Q, S, R, P

Question Type: Free Text

Date Added: Wed 12th Aug 2020

Last Modified: N/A

QID#: 22,991,658

Question 43

Primary 3 Science » Primary 3 Science (Term 4)

0 pts

) The diagram below shows a ladder.



Which material, P, Q, R or S, is most suitable to make the ladder? Explain why. [1]

Question Type: Essay
Date Added: Wed 12th Aug 2020
Last Modified: N/A
QID#: 22,991,671

Correctly answered feedback

Material P, because it did not bend when the 200g weight was hung on P, so a person would not fall from using a ladder made from Material P.

Incorrectly answered feedback

Material P, because it did not bend when the 200g weight was hung on P, so a person would not fall from using a ladder made from Material P.

Question 44

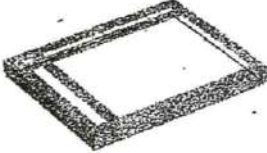
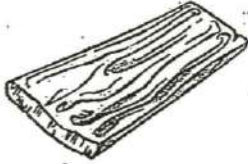
Primary 3 Science » Primary 3 Science (Term 4)

0 pts

Andy fell into the water from a boat. He cannot swim.



His younger brother threw him the following two objects.

ceramic tile	wooden plank
	

Assuming both objects are strong, which object should Andy hold on in the water to till help arrives? Explain your answer. [1]

Question Type: Essay
 Date Added: Wed 12th Aug 2020
 Last Modified: N/A
 QID#: 22,991,700

Correctly answered feedback

Wooden plank as it can float on water, but the ceramic tile will sink in water.

Incorrectly answered feedback

Wooden plank as it can float on water, but the ceramic tile will sink in water.

[Answers](#) | [Edit](#) | [Duplicate](#) | [Used In](#) | [Reorder](#)

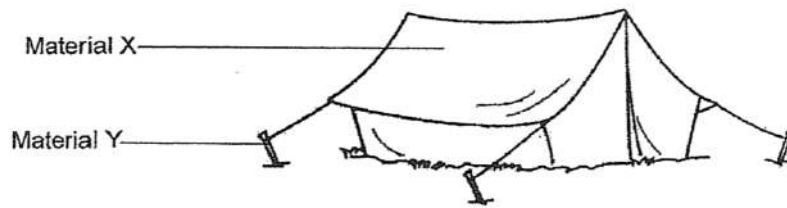
[Remove From Test](#)

Question 45

Primary 3 Science » Primary 3 Science (Term 4)

0 pts

Ken wants to pitch a tent for camping as shown below. The tent is to protect him from the wet weather when Ken sleeps in the night. The tent must be light enough for him to carry. It can also be folded to be kept in his bag.



(a) Which property must material X have in order to protect Ken from wet weather? Explain your answer. [1]

Question Type: Essay
 Date Added: Wed 12th Aug 2020
 Last Modified: N/A
 QID#: 22,991,719

Correctly answered feedback

Material X must be waterproof. If Material X is not waterproof, Ken would get wet during the wet weather.

Incorrectly answered feedback

Material X must be waterproof. If Material X is not waterproof, Ken would get wet during the wet weather.

[Answers](#) | [Edit](#) | [Duplicate](#) | [Used In](#) | [Reorder](#)

[Remove From Test](#)

Question 46

Primary 3 Science » Primary 3 Science (Term 4)

0 pts

Based on the above diagram, what property must material Y have? Explain your answer.

Question Type: Essay
 Date Added: Wed 12th Aug 2020
 Last Modified: N/A
 QID#: 22,991,735

Correctly answered feedback

Material Y must be strong. If it is not strong, Ken's tent will fly away.

Incorrectly answered feedback

Material Y must be strong. If it is not strong, Ken's tent will fly away.

[Answers](#) | [Edit](#) | [Duplicate](#) | [Used In](#) | [Reorder](#)

[Remove From Test](#)

Question 47

Primary 3 Science » Primary 3 Science (Term 4)

1 pt

What would Material X most likely be?

- A) Wood
- B) Metal
- ✓ C) Plastic
- D) Ceramic

Question Type: Multiple Choice
Randomize Answers: No
Date Added: Wed 12th Aug 2020
Last Modified: N/A
QID#: 22,991,745

[Answers](#) | [Edit](#) | [Duplicate](#) | [Used In](#) | [Reorder](#)

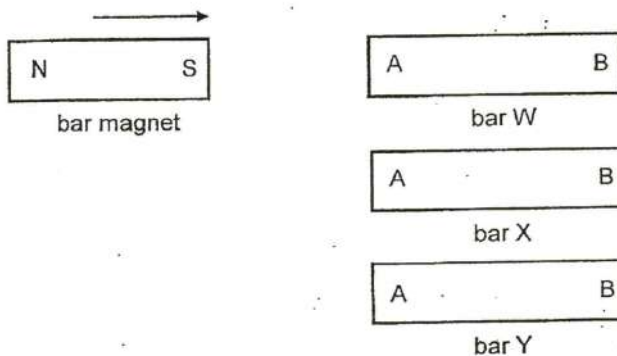
[Remove From Test](#)

Question 48

Primary 3 Science » Primary 3 Science (Term 4)

0 pts

Ben carried out an experiment with a bar magnet and 3 different bars, W, X and Y. The ends of the bars are labelled as A and B. He brought the south pole of the bar magnet near the ends of the three bars.



He recorded his observations in the table below.

Bar	Reaction to the south pole of the magnet	
	A	B
W	repel	attract
X	attract	attract
Y	no reaction	no reaction

(a) Based on the results above, can bar Y be made of plastic? Explain your answer. [2]

Question Type: Essay
Date Added: Wed 12th Aug 2020
Last Modified: N/A
QID#: 22,991,766

Correctly answered feedback

Yes, Y can be made of plastic as plastic is non-magnetic and so it cannot be attracted by the magnet.

Incorrectly answered feedback

Yes, Y can be made of plastic as plastic is non-magnetic and so it cannot be attracted by the magnet.

[Answers](#) | [Edit](#) | [Duplicate](#) | [Used In](#) | [Reorder](#)

[Remove From Test](#)

Question 49

Primary 3 Science » Primary 3 Science (Term 4)

0 pts

Which bar, W, X or Y is a magnet? Explain your answer

Question Type: Essay

Date Added: Wed 12th Aug 2020

Last Modified: N/A

QID#: 22,991,777

Correctly answered feedback

W is a magnet as it can repel the bar magnet

Incorrectly answered feedback

W is a magnet as it can repel the bar magnet

[Answers](#) | [Edit](#) | [Duplicate](#) | [Used In](#) | [Reorder](#)

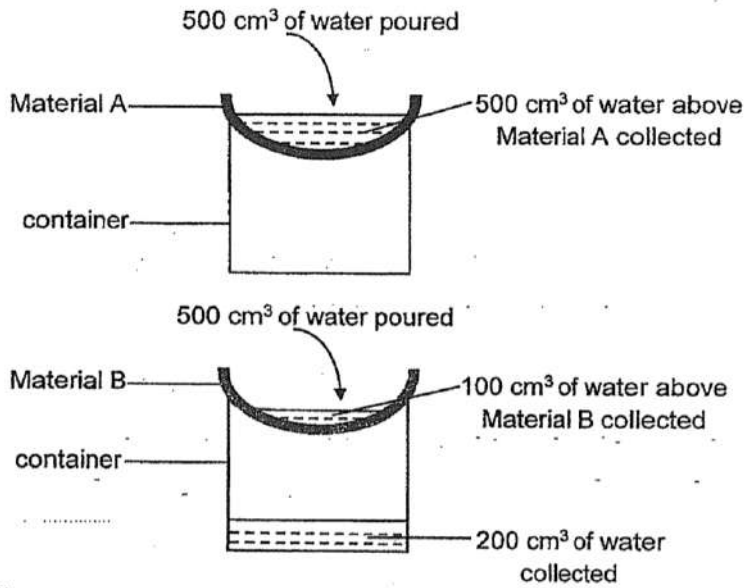
[Remove From Test](#)

Question 50

Primary 3 Science » Primary 3 Science (Term 4)

0 pts

Jessica placed a piece of material A and B of the same thickness over the mouth of two similar empty containers. She then poured the same amount of water onto each material. The diagrams below show what she observed after 5 minutes.



(a) What property of the material was Jessica trying to find out? [1]

Question Type: Essay
Date Added: Wed 12th Aug 2020
Last Modified: N/A
QID#: 22,991,799

Correctly answered feedback

She is trying to find out if both materials are waterproof.

Incorrectly answered feedback

She is trying to find out if both materials are waterproof.

[Answers](#) | [Edit](#) | [Duplicate](#) | [Used In](#) | [Reorder](#)

[Remove From Test](#)

Question 51

Primary 3 Science » Primary 3 Science (Term 4)

0 pts

What can Jessica do to make the results of her experiment more reliable?

Question Type: Essay
Date Added: Wed 12th Aug 2020
Last Modified: N/A
QID#: 22,991,807

Correctly answered feedback

She can repeat the experiment a few more times.

Incorrectly answered feedback

She can repeat the experiment a few more times.

[Answers](#) | [Edit](#) | [Duplicate](#) | [Used In](#) | [Reorder](#)

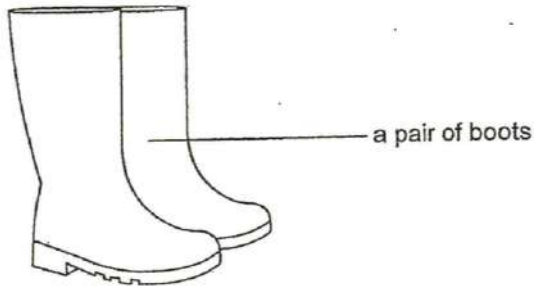
[Remove From Test](#)

Question 52

Primary 3 Science » Primary 3 Science (Term 4)

0 pts

Uncle John works in a market with wet floor. He wears the following pair of boots to work.



Based on the observations above, which material, A, B, ~~C~~ or ~~D~~, is most suitable for making his boots? Explain your answer. [1]

Question Type: Essay
 Date Added: Wed 12th Aug 2020
 Last Modified: N/A
 QID#: 22,991,827

Correctly answered feedback

Material A is most suitable. His boots must be waterproof so that his feet are kept dry.

Incorrectly answered feedback

Material A is most suitable. His boots must be waterproof so that his feet are kept dry.

[Answers](#) | [Edit](#) | [Duplicate](#) | [Used In](#) | [Reorder](#)

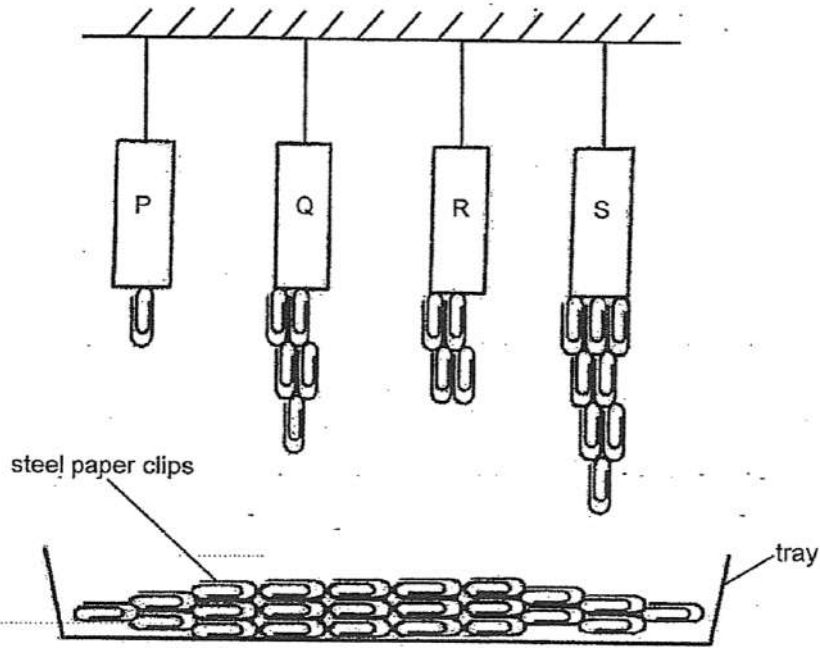
[Remove From Test](#)

Question 53

Primary 3 Science » Primary 3 Science (Term 4)

0 pts

Jasmine hung four magnets, P, Q, R and S, above a tray of identical steel paper clips. Her observation is shown below.



(a) Based on her observation, which is the strongest magnet? Explain your answer. [1]

Question Type: Essay
 Date Added: Wed 12th Aug 2020
 Last Modified: N/A
 QID#: 22,991,840

Correctly answered feedback

S, as S has the most amount of steel paper clips attracted.

Incorrectly answered feedback

S, as S has the most amount of steel paper clips attracted.

[Answers](#) | [Edit](#) | [Duplicate](#) | [Used In](#) | [Reorder](#)

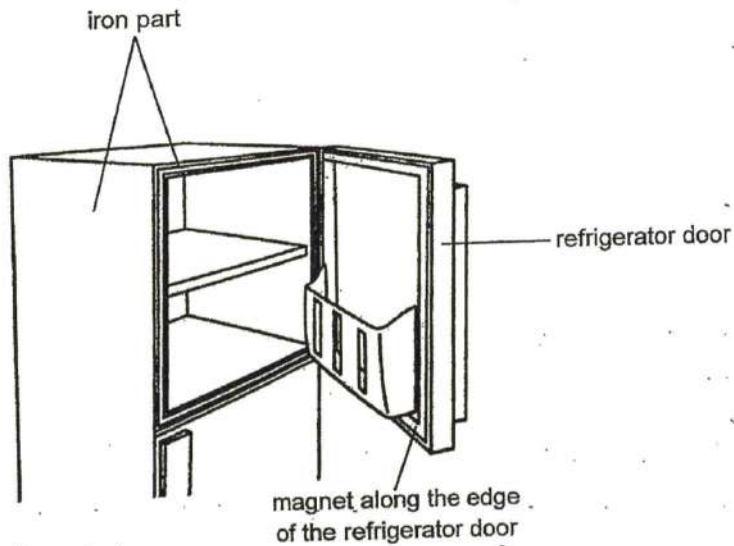
[Remove From Test](#)

Question 54

Primary 3 Science » Primary 3 Science (Term 4)

0 pts

The diagram below shows a refrigerator with its door open.



(b) Explain how the magnet along the edge of the refrigerator door keep the refrigerator door tightly shut. [2]

Question Type: Essay
Date Added: Wed 12th Aug 2020
Last Modified: N/A
QID#: 22,991,854

Correctly answered feedback

Iron is a magnetic material so the magnet along the edge of the refrigerator door can attract the iron part of the refrigerator.

Incorrectly answered feedback

Iron is a magnetic material so the magnet along the edge of the refrigerator door can attract the iron part of the refrigerator.

[Answers](#) | [Edit](#) | [Duplicate](#) | [Used In](#) | [Reorder](#)

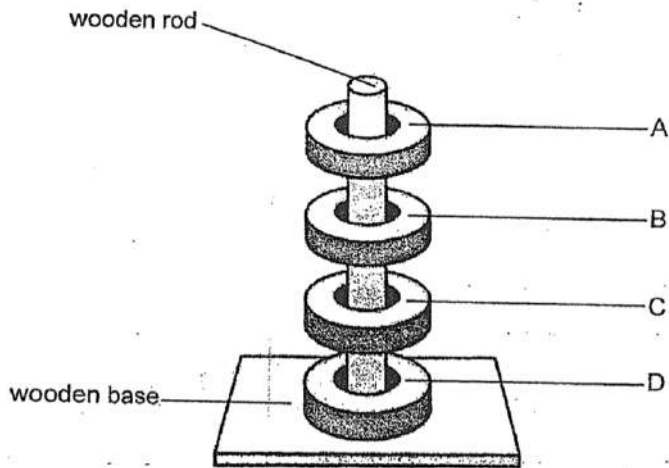
[Remove From Test](#)

Question 55

Primary 3 Science » Primary 3 Science (Term 4)

0 pts

Joanna placed four identical ring magnets, A, B, C and D, through a wooden rod on a wooden base. She observed that these magnets were able to float at a distance away from each other as shown in the drawing below.



(a) Explain why the magnets, A, B, C and D, were floating a distance away from each other. [2]

Question Type: Essay
 Date Added: Wed 12th Aug 2020
 Last Modified: N/A
 QID#: 22,991,861

Correctly answered feedback

The like poles of the magnets are facing each other so that magnets repel each other.

Incorrectly answered feedback

The like poles of the magnets are facing each other so that magnets repel each other.

[Answers](#) | [Edit](#) | [Duplicate](#) | [Used In](#) | [Reorder](#)

[Remove From Test](#)

Question 56

Primary 3 Science » Primary 3 Science (Term 4)

0 pts

The like poles of the magnets are facing each other so that magnets repel each other.

Question Type: Essay
 Date Added: Wed 12th Aug 2020
 Last Modified: N/A
 QID#: 22,991,868

Correctly answered feedback

Joanna can place the south and north pole facing each other to attract each other.

Incorrectly answered feedback

Joanna can place the south and north pole facing each other to attract each other.

[Answers](#) | [Edit](#) | [Duplicate](#) | [Used In](#) | [Reorder](#)

[Remove From Test](#)